

# **Navigating Ecology's *Water Resources Explorer***

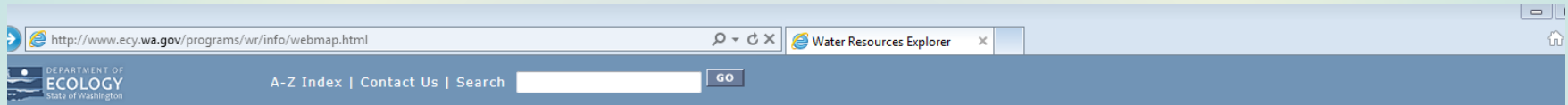
**Washington Small Fruit Conference  
December 5, 2013**

**Kasey Cykler  
Bellingham Field Office**

# Water Resources Explorer

- New publicly available tool to search for water rights information
- Interactive web map
  - Overlays water rights information
  - Satellite imagery or topo map
  - Scanned images of water rights documents

# <http://www.ecy.wa.gov/programs/wr/info/webmap.html>



[Water Resources Home](#) > Water Resources Explorer

## Water Resources Explorer

### Welcome to the Department of Ecology's Statewide Water Rights Web Map

As part of the Department of Ecology's ongoing efforts to improve the efficiency of its water management services, the Water Resources Program has posted a new water right map on its Web site providing convenient access to water right information throughout Washington State. Now anyone with a personal computer can locate and research water rights on land parcels anywhere in the state. The Webmap provides direct public access through a geographical interface to Ecology's voluminous records of water rights and claims. The Statewide Water Resources Webmap provides information on over 230,000 active water right and claim records in the Water Resources Program database, many that have been in existence since the late 1800s.

The Water Resources Program has been using Geographic Information System (GIS) computer software to map the location of water rights and claims since 1993, and scanning and converting water right documents on microfilm to electronic images since 1999.

Water right records can be searched on the Web map by document/record number or by the name of the person the water right was issued to (or the name of the claimant, if it is a water right claim). The Web map provides information that until now was accessible only by contacting staff in the Water Resources Program, through the public disclosure process, or through individual research in an Ecology office.

The Web map is an efficient tool for anyone researching water rights or water right claims, or seeking to obtain a water right in Washington State. Consultants, real estate agents, local government workers, elected officials, and holders of existing water rights will find the map a valuable source of information.

### Water Resources Explorer

The Web map section and/or quantity report section allows users to query and view data and documents relating to water rights and claims. This includes, if completed, the mapped place of water use and water sources (existing and proposed) for water right certificates, water use permits, applications for water use, and claims of water use as described on the documents maintained by Ecology.

Links to water right documents allow the user access to scanned images of water resource documents that include:

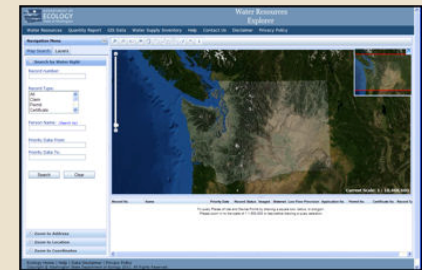
- Water right certificates, water use permits, applications for water use, and claims of water use.
- The authorized, claimed, or requested quantity of water (both current and annual) and number of irrigated acres.
- The purpose of water use, priority date or date of first use, as well as the name of record.
- Information regarding metering, if required.
- Information not maintained directly by the Water Resources Program such as Ecology or USGS flow data from stream gauging stations.

### Web map section

Currently **about 53% of the water right documents have been mapped using GIS**. Mapped water rights provide the user with a graphical representation of the place of use and point of withdrawal/diversion by using colored lines and dots. (Look at Whatcom County or the main stem of the Columbia River for completed areas in the state to see what this looks like.) The mapping of water rights is a work in progress and its development will continue as staff and budget constraints allow. Ecology plans to complete mapping of all water rights in Washington State by 2017, based on 2% mapped per quarter for seven years.

- **Updated!** [Mapping Water Rights in Washington State](#) - Spreadsheet and state map tracking the progress of mapping water rights by WRIA

### Begin your search:



### View the video tutorial:



**Before you use the Web map - Here is how to prepare your computer and browser:**



# Water Resources Explorer

Water Resources    Quantity Report    GIS Data    Water Supply Inventory    Help    Contact Us    Disclaimer    Privacy Policy

### Map Navigation Menu

Search Options    Layers

#### Search by Water Right

Record number

Record Type

- All
- Claim
- Permit
- Certificate

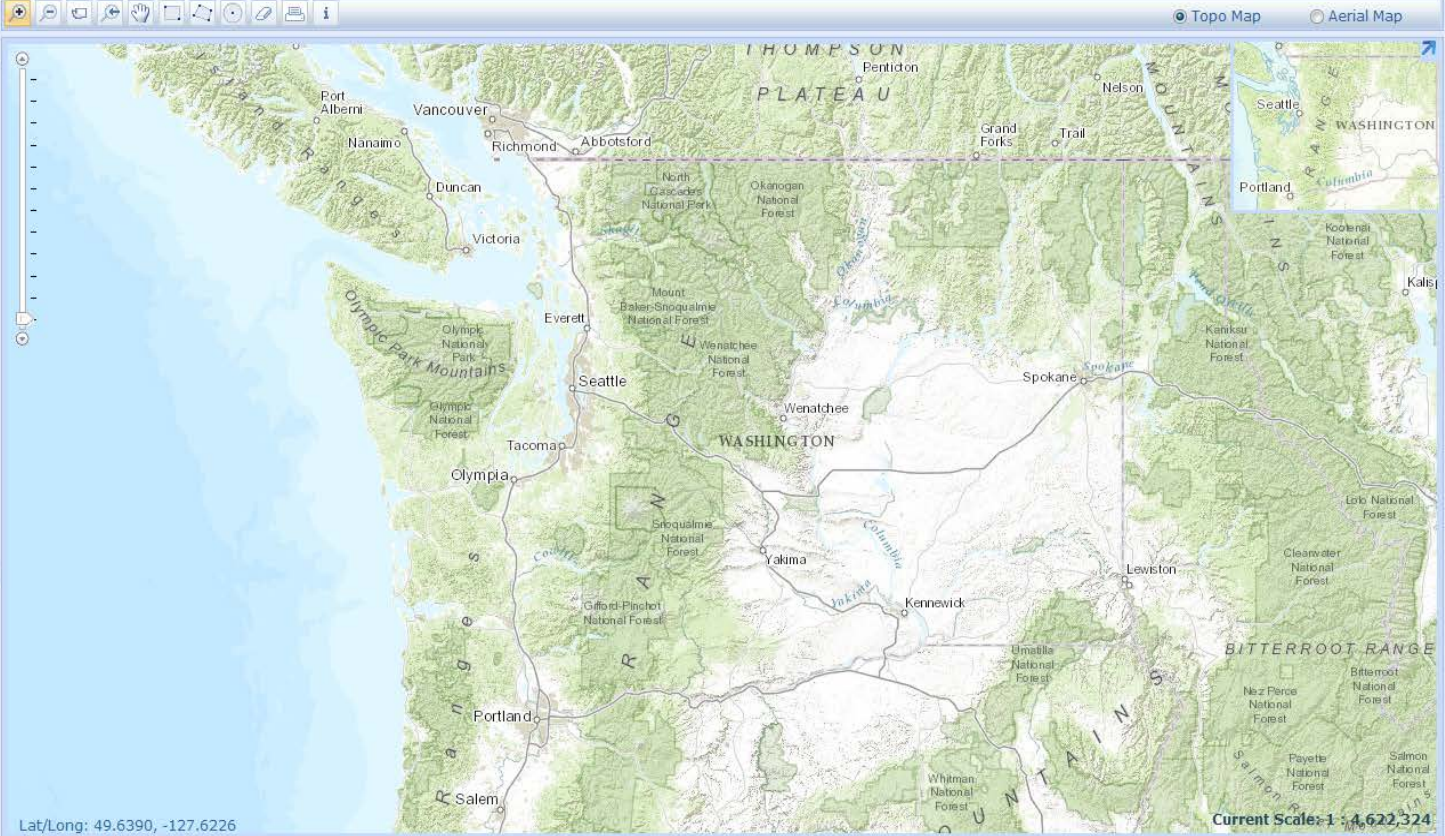
Person Name *(Search tip)*

Priority Date From

Priority Date To

Search

Clear



Lat/Long: 49.6390, -127.6226

Current Scale: 1:4,622,324

| Record No. | Name | Priority Date | Record Status | Imaged | Metered | Low Flow Provision | Application No. | Permit No. | Certificate No. | Record Type |
|------------|------|---------------|---------------|--------|---------|--------------------|-----------------|------------|-----------------|-------------|
|------------|------|---------------|---------------|--------|---------|--------------------|-----------------|------------|-----------------|-------------|

Zoom in until Device Points or Places of Use are visible. Then use the square box, radius, or polygon tool to make a query selection.

Search by Parcel

Zoom to Location

Zoom to Coordinates

# Search options:

The Map & Map Tools  
(icons above the map)

Map  
Navigation  
Menu  
(left-hand  
bar)



DEPARTMENT OF  
**ECOLOGY**  
State of Washington

Water Resources Explorer

Map Navigation Menu

Search Options Layers

Search by Water Right

Record number

Record Type

All  
Claim  
Permit  
Certificate

Person Name (Search sp)

Priority Date From

Priority Date To

Search Clear

Search by Parcel

Zoom to Location

Zoom to Coordinates

Lat/Long: 49.6390, -127.6226

| Record No.   | Name | Priority Date | Record Status | Imaged | Metered | Low Flow Provision | Application No. | Permit No. | Certificate No. | Record Type |
|--|------|---------------|---------------|--------|---------|--------------------|-----------------|------------|-----------------|-------------|
| Zoom in until Device Points or Places of Use are visible.<br>Then use the square box, radius, or polygon tool to make a query selection. |      |               |               |        |         |                    |                 |            |                 |             |

Summary information for record selected



Record images (select to view or print)



The screenshot shows the Water Resources Explorer interface. The top navigation bar includes 'Water Resources', 'Quantity Report', 'GIS Data', 'Water Supply Inventory', 'Help', 'Contact Us', 'Disclaimer', and 'Privacy Policy'. The left sidebar contains a 'Map Navigation Menu' with 'Search Options', 'Layers', and 'Selected Record'. The 'Selected Record' section displays details for record G1-00449CWRIS, including quantities (180,000 GPM, 16,700 Acre Feet, 10.00 Irrigated Acres), purposes (Irrigation), source names (WELL), and source types (Well). Below this are links for record images: Progress Sheet, Black and White 150 dpi, Report of Exam, Black and White 150 dpi, Certificate, Black and White 150 dpi, and Permit, Black and White 150 dpi. A 'Submit Record Correction' button is also present. The main map area shows an aerial view of Lynden Cemetery with a red box highlighting a specific well location. A red arrow points from the text 'Record place of use' to this box. Below the map is a table of records with columns: Record No., Name, Priority Date, Record Status, Imaged, Metered, Low Flow Provision, Application No., Permit No., Certificate No., and Record Type. A red arrow points from the text 'Results shown under map (click on record to get information)' to the table.

| Record No.     | Name              | Priority Date | Record Status | Imaged | Metered | Low Flow Provision | Application No. | Permit No. | Certificate No. | Record Type |
|----------------|-------------------|---------------|---------------|--------|---------|--------------------|-----------------|------------|-----------------|-------------|
| G1-14608ECL    | CITY OF LYNDEN    | ...           | Active        | Y      | N       | N                  | ...             | ...        | ...             | Claim B     |
| G1-14609ECL    | CITY OF LYNDEN    | ...           | Active        | Y      | N       | N                  | ...             | ...        | ...             | Claim G     |
| S1-21940CWRIS  | Lynden City       | 04/26/1974    | Active        | Y      | Y       | N                  | ...             | ...        | S1-21940 C      | Cert        |
| S1-176130CWRIS | Lynden City       | 11/14/1962    | Active        | Y      | Y       | N                  | 17613           | 13237      | 06986           | Cert        |
| S1-141620CWRIS | Lynden City       | 12/03/1969    | Active        | Y      | Y       | N                  | 14152           | 10588      | 06821           | Cert        |
| G1-00449CWRIS  | Lynden City       | 04/22/1971    | Active        | Y      | Y       | N                  | 11809           | 10556      | G1-00449 C      | Cert        |
| G1-20099       | Lynden Hay Co Inc | 02/25/1991    | Active        | Y      | N       | N                  | ...             | ...        | ...             | NewApp      |
| S1-28159       | Lynden City       | 09/26/2002    | Active        | Y      | N       | N                  | ...             | ...        | ...             | NewApp      |
| S1-28151       | Lynden City       | 09/28/2001    | Active        | Y      | Y       | N                  | ...             | ...        | ...             | Perit       |
| G1-...         | Lynden City       | 02/26/2003    | Active        | Y      | N       | N                  | ...             | ...        | ...             | NewApp      |
| G1-...         | Lynden City       | 09/22/2000    | Active        | Y      | N       | N                  | 00543           | 00017      | 00041           | ChgApp      |
| R1-...         | Lynden City       | 04/10/2009    | Active        | Y      | N       | N                  | ...             | ...        | ...             | NewApp      |

Record place of use

Results shown under map (click on record to get information)

# A few things to keep in mind...

Turn off/on  
“layers,” as  
desired.

Turn on  
“Water  
Places of  
Use”

The screenshot shows the 'Water Resources Explorer' web application. The navigation menu on the left lists various layers, including 'Water Device Points', 'Water Places of Use', and 'Administrative Boundaries'. Two red arrows point from the text on the left to the 'Layers' and 'Water Places of Use' sections. The map displays a satellite view of Washington state with various cities labeled. The data table at the bottom is currently empty and contains instructions for zooming in on device points or places of use.

| Record No.  | Name | Priority | Date | Record Status | Imaged | Metered | Low Flow Provision | Application No. | Permit No. | Certificate No. | Record Type |
|---|------|----------|------|---------------|--------|---------|--------------------|-----------------|------------|-----------------|-------------|
| Zoom in until Device Points or Places of Use are visible. Then use the square box, radius, or polygon tool to make a query selection. |      |          |      |               |        |         |                    |                 |            |                 |             |

# Not all water rights are mapped yet

| WRIA | Name                | % Mapped |
|------|---------------------|----------|
| 1    | Nooksack            | 100%     |
| 2    | San Juan            | 100%     |
| 3    | Lower Skagit-Samish | 100%     |
| 4    | Upper Skagit        | 100%     |
| 5    | Stillaguamish       | 73%      |
| 6    | Island              | 100%     |
| 7    | Snohomish           | 50%      |
| 8    | Cedar-Sammamish     | 22%      |
| 9    | Duwamish-Green      | 13%      |
| 10   | Puyallup-White      | 11%      |



Department of Ecology website:

[www.ecy.wa.gov](http://www.ecy.wa.gov)

Water Resources Explorer:

<https://fortress.wa.gov/ecy/waterresources/map/WaterResourcesExplorer.aspx>

Ecology's Bellingham Field Office

(360) 715-5200